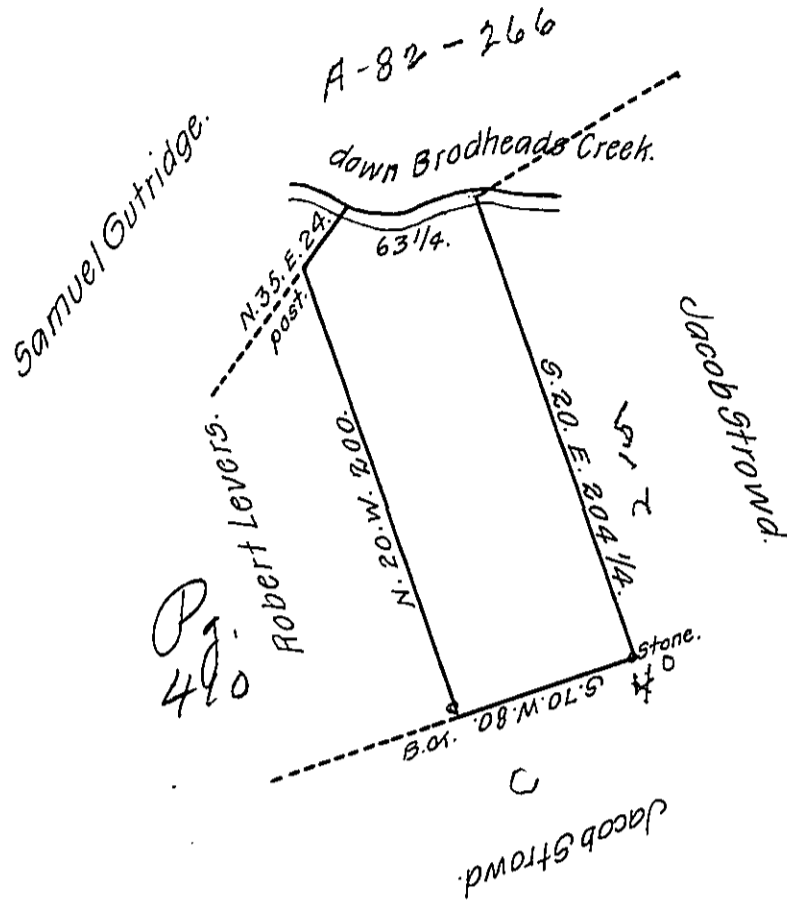


The bearing and distance
down Brodheads Creek are:

1. S. 74 3/4. E. 15 1/4.
 2. N. 70 1/2. E. 48.
- 63 1/4.



By Virtue of an Application dated the 5th August, 1765 N^o 270
Surveyed the 2^d September, 1794 to Thomas White the above described
tract of land Situate on the South Side of Brodheads creek in Lower Smith-
field Township in Northampton County containing ninety seven acres
twenty perches and the allowance of Six & Cent.

To Daniel Brodhead, Esquire,
Surveyor General.

& Geo. Palmer. -

IN TESTIMONY that the above is a copy of the original remaining on file in
the Department of Internal Affairs of Pennsylvania, made
conformably to an Act of Assembly approved the 16th day of
February, 1833, I have hereunto set my Hand and caused
the Seal of said Department to be affixed at Harrisburg,
this twenty third day of April, 1912.

Henry Houck
Secretary of Internal Affairs.